

# Measuring Small-Fabric Samples Using Transmission Loss Tube Apparatus

Kelby P. Weilnau, Edward R. Green, Brüel & Kjær North America Inc., Canton, Michigan  
Zach E. Lampert, W. L. Gore & Associates, Inc., Elkton, Maryland  
Jason T. Kunio, Brüel & Kjær North America Inc., Elgin, Illinois

Small-fabric membranes are used in mobile phones and earbud headphones to cover microphones and loudspeakers. The membranes provide protection against moisture, contamination, pressure changes, and physical intrusion. The membranes must also have minimal sound transmission loss that must be quantified. This article describes the use of the tube apparatus to measure the normal incidence sound transmission loss and acoustic impedance across small-fabric membrane samples. Methods are described for area change corrections and for minimizing the effect of membrane natural frequencies. Developing an accurate and efficient test methodology is important, given the large number of devices manufactured and the lack of guidance in ASTM E2611-09 specific to testing these materials.

This article describes methods for measuring the normal incidence sound transmission loss and acoustic impedance across small-fabric membrane samples using the transmission loss tube (impedance tube) apparatus. These materials are very thin and exhibit minimal sound transmission loss, so they present certain challenges in producing effective measurements.

A typical sound transmission loss tube apparatus setup is shown in Figure 1. The four-microphone method uses two source-tube and two receive-tube microphones to decompose sound in the tube into so-called left-going and right-going plane waves. From this wave decomposition process, the pressure and particle velocity upstream and downstream of the sample is determined, which allows for the formation of the transfer matrix of the test article and subsequent calculations of its acoustic properties.<sup>1</sup> Given a fixed diameter of source and receive tubes, it is sometimes necessary to use conical adapters to test samples smaller than the given diameter.<sup>2</sup>

Hardware used for testing included a Brüel & Kjær Type 4206T impedance tube kit modified to include conical adapters and a Type 3160 LAN-XI front end with generator output. Software used for data acquisition was the Brüel & Kjær Type 7758 PULSE acoustic material testing in a tube, version 20.

A typical application for thin membrane materials is in the protection of acoustic transducers in mobile phones (see Figure 2) from moisture, contamination, pressure changes and physical intrusion. In this case, however, it is desirable for the material to be highly acoustically transparent, so as not to detract from the performance of the transducer. To evaluate the materials for this application, acoustic transmission loss testing must be performed. ASTM E2611-09 does not provide any specific instruction with regard to these types of materials and their testing,<sup>3</sup> so it's important for an accurate and efficient test methodology to be developed.

## Sample Preparation

The manner in which a sample is prepared for testing can greatly affect the outcome of acoustic transmission loss measurements. One of the most important aspects of sample preparation is consistency across measurement sets. Preparing samples in a consistent and repeatable fashion reduces measurement uncertainty and allows for more accurate comparisons between sets of measurements. It is also important to achieve a "realistic" mounting condition. The sample should be mounted so that is representative of the end use to produce meaningful test results.

Typically the sample is attached to a test fixture for ease of

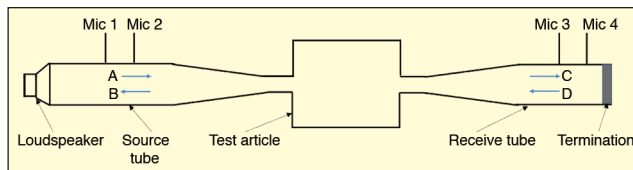


Figure 1. Schematic of impedance tube apparatus used to perform sound transmission loss (STL) measurements.

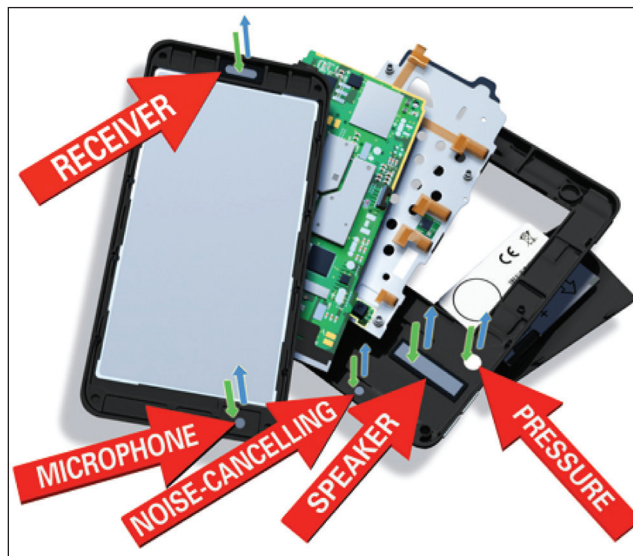


Figure 2. Example of material application.

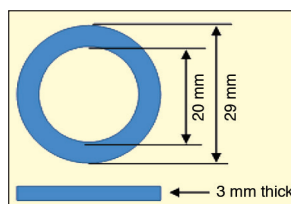


Figure 3. Schematic of sample fixture used in TL measurements.

interface with the impedance tube apparatus. The test fixture used here was a ring shape, with outer diameter equal to 29 mm (the inner diameter of the impedance tube apparatus) and an inner diameter of 20 mm (see Figure 3). The fixture functions as a sample holder and facilitates installation of the sample into the test apparatus. The nonwoven fabric material and microporous expanded polytetrafluoroethylene (ePTFE) membrane material used in this work were provided by W. L. Gore & Associates. Thin films of polyurethane were also examined and were obtained commercially from Covestro.

Adhesion of the material sample to the fixture was achieved by the use of both double-sided and single-sided adhesive cut to match the shape of the fixture. The double-sided adhesive bonds the sample to the fixture, and the single-sided adhesive leaves open the portion of the material to be tested and aids in alignment of the sample with the tube apparatus. The final stack-up is shown in Figure 4.

In general, thin polymeric materials used for portable electronic venting applications are not self-supporting and can easily wrinkle or be inadvertently tensioned during preparation. Excess tension on the sample can exacerbate membrane modes, which causes large peaks in the transmission loss data. This type of behavior is illustrated in Figure 5, which shows the transmission loss of com-

Based on a paper presented at Noise-Con 2016, the 2016 Conference on Noise Control Engineering, Providence, RI, June 2016.

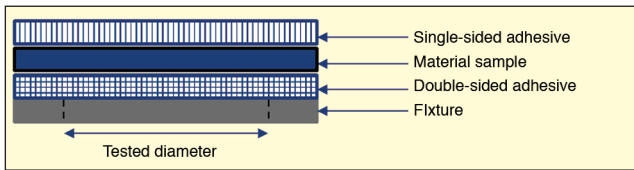


Figure 4. Adhesive stack-up showing how material under test is attached to fixture.

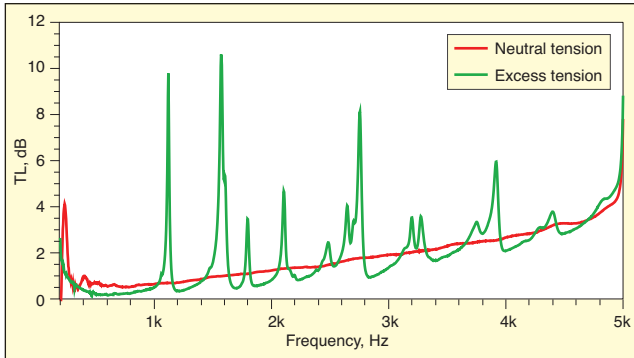


Figure 5. Transmission loss (TL) vs. frequency plot for nonporous polyurethane membranes prepared with neutral (red) and excess (green) tension; diameter and thickness of membrane were 20 mm and 25  $\mu\text{m}$ , respectively.

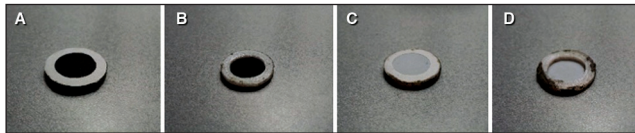


Figure 6. Sample mounting, top and bottom views (Left A-B: non-woven material – 250  $\mu\text{m}$  thick; Right C-D: thin microporous ePTFE membrane – 9  $\mu\text{m}$  thick).

mercially available nonporous polyurethane thin films. One sample was prepared so that the active area of the membrane was under a “neutral” tension state, while the other was prepared with excess tension. The large peaks seen here are the result of the membrane mode behavior of the sample.

For thin-membrane materials, it is best to first lay the material flat, apply the double-sided adhesive to the fixture, and then apply the fixture to the material to be tested. Again, the goal is to consistently capture the membrane on the fixture with a minimal amount of tension. As shown in Fig. 6, the samples are planar (not baggy) and free of wrinkles.

In laying the material flat, it may be helpful to lightly “brush” the wrinkles out with a strip of paper or similar thin flexible material. The material can then be cut to match the outer diameter of the fixture, taking care to avoid deformation of the material, since this could change the material properties and acoustic performance of the material. Lastly, the single-sided adhesive can be applied. Samples prepared in this manner will be appropriately tensioned so that transmission loss due to membrane mode behavior is minimized.

Conical adapters are used to transition from the diameter of the impedance tube apparatus to a different test diameter. The sample/fixture assembly is mounted between two cones so that the measurement of the 20-mm sample may be performed using the 29-mm-diameter impedance tube apparatus. The top side of the sample fixture assembly faces in the upstream direction when installed in the tube apparatus. The single-sided adhesive is used to aid in aligning the sample in the assembly. Once aligned, the assembly is sealed with clay to eliminate acoustic leakage and then secured with gaffers tape before installing in the tube apparatus. It would be helpful in the future to design fixtures to streamline the alignment, sealing, securing, and installation.

The ideal size of cones is a balance between length and upstream/downstream area ratio.<sup>1,2</sup> For example, increasing the length of the cones improves the low-frequency performance<sup>1</sup> of the cones

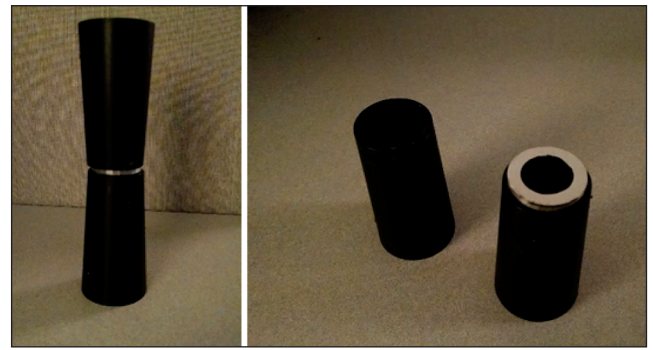


Figure 7. Conical adapters and fixture assembly used in transmission loss measurements.

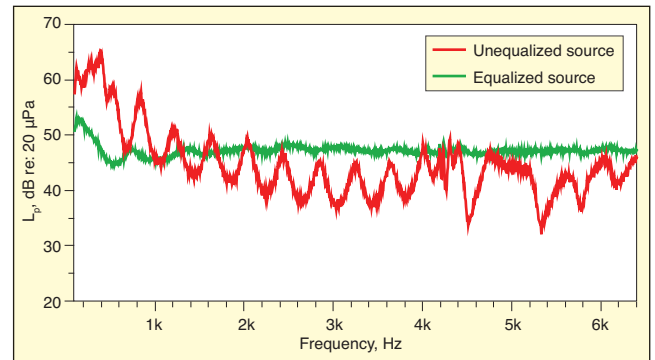


Figure 8. Sound level  $L_p$  vs. frequency for an equalized (green) and unequalized (red) sound source as measured by first upstream microphone (anechoic termination, empty tube).

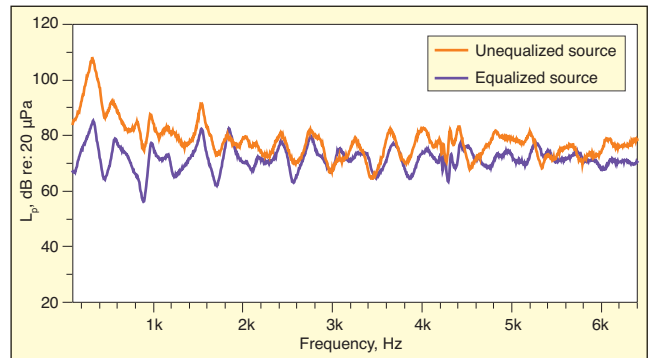


Figure 9. Sound level  $L_p$  vs. frequency for an equalized (blue) and unequalized (red) sound source as measured by the first upstream microphone (anechoic termination, with sample).

but increases viscous and thermal losses at the cone/air boundary layer. Increasing the area reduction ratio increases measurement error and decreases signal to noise.<sup>1,2</sup>

To ensure an accurate measurement, it is important that there is no acoustic leakage around the cones or fixture. Even with well-designed fixtures, it may be necessary to use clay to improve the sealing performance. The effect of the conical adapters (including the thermal and viscous losses at the cone-air boundary layer) and fixture can and should be removed in postprocessing by the transfer matrix method.<sup>2,4</sup>

## Measurement

To improve the accuracy of the measurements, an equalization correction was applied to the sound source so that the frequency spectrum within the tube was as flat as possible. The frequency response within the tube largely depends on the end boundary condition; so equalization was performed using an anechoic termination and without any sample or conical adapters installed to avoid any reflection effects. The microphone closest to the source was used as the equalization reference.

In practice, when measurements are being made, the observed

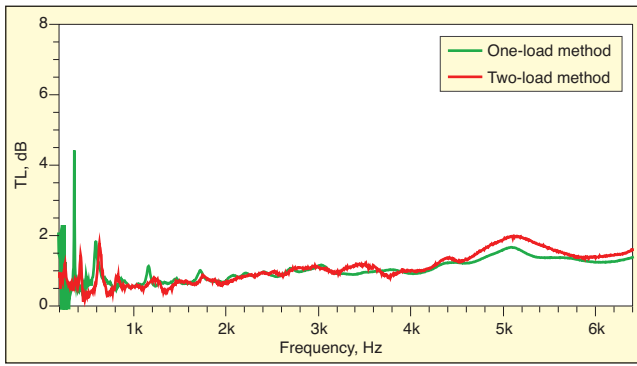


Figure 10. Transmission loss vs. frequency plot for a microporous ePTFE membrane measured using one-load (green) vs two-load (red) method; diameter and thickness of membrane were 20 mm and 9  $\mu\text{m}$ , respectively.

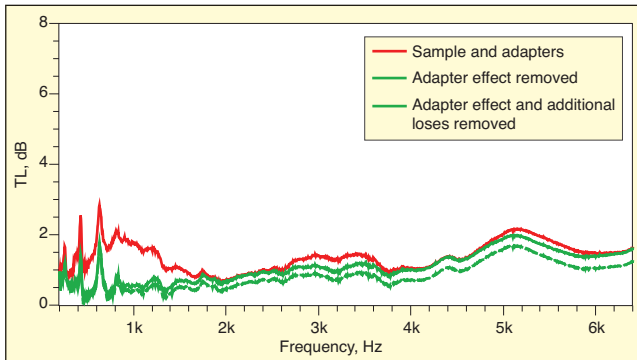


Figure 11. Effect of conical adapters and viscous/thermal loss at adapter-air boundary layer on measured TL for microporous ePTFE membrane; diameter and thickness of the membrane were 20 mm and 9  $\mu\text{m}$ , respectively.

spectrum of the first upstream microphone will not be as flat as the equalized spectrum shown in Figure 8. When a sample is installed in the tube apparatus, the upstream microphone measures both direct sound from the loudspeaker and reflections in the tube caused by the presence of the sample. An example of the expected spectra can be seen in Figure 9. Regardless, the direct sound incident on the sample is equalized.

The purpose for this source equalization is twofold. First, a flat frequency content incident on the material under test minimizes the effect of any nonlinear excitation of the sample. Since the tube will have pressure minima and maxima due to its geometry, equalizing the source avoids excitation levels that are significantly larger or smaller at certain frequencies than at others. Second, a flat frequency spectrum allows for a straightforward interpretation of the excitation level. Overall and total levels of the spectrum can be misleading, because they are susceptible to being dominated by large peaks caused by pressure maxima in the tube apparatus. For example, two spectra may have equivalent overall levels, though the frequency content of each is very different. In prescribing the use of an equalized spectrum, it is possible to also prescribe an appropriate excitation level.

Typical normal incidence transmission loss measurements are performed on materials or mufflers that provide levels of transmission loss in excess of 10-20 dB. Given that small fabric samples are typically very nearly acoustically transparent materials, providing transmission loss of less than 5 dB, the source levels in the tube apparatus need not be as high as for muffler systems. Source levels that are too high can cause nonlinear excitation of the samples, which is exhibited by a “crackling” noise and poor coherence between microphones in the tube apparatus. For small fabric samples, the spectrum levels at the microphone closest to the source should be centered around 70-75 dB (re: 20  $\mu\text{Pa}$ ) across the measured frequency span. This level avoids any nonlinear excitation of the sample and is sufficiently high to produce an accurate measurement.

Testing was performed using the two-load, four-microphone

method for measuring normal incidence transmission loss. The one-load method was considered, since it is more similar in boundary condition to the source equalization process than the two-load method. However, the one-load method necessitates the use of a sufficiently anechoic termination at all measured frequencies, which can be a challenge to achieve. The two-load method eliminates this necessity by simply requiring two different termination loads.<sup>3</sup> The measured results were seen to be appropriately similar between one- and two-load methods.

## Data Analysis

The effects of the fixture assembly and conical adapters must be removed to produce transmission loss results for the material sample alone. The fixture used for this testing was comprised of a cone that reduces the test inner diameter from 29 mm to 20 mm, the sample holder, which has an inner diameter of 20 mm and a thickness of 3 mm, and another cone that expands the test inner diameter from 20 mm to 29 mm to interface with the remainder of the tube apparatus. To remove the effect of this fixture from the measured data, the transfer matrix method<sup>4</sup> as described in Reference 2 is used.

The output from the adapter removal processing is the four-pole transfer matrix elements of the material under test. This information is then used to calculate transmission loss and acoustic impedance across the sample. The transmission loss, given the transfer matrix elements, is calculated as follows:<sup>5</sup>

$$TL = 10 \log_{10} \left( \frac{1}{4} \left| T_{11} + \frac{T_{12}}{\rho_0 c} + \rho_0 c T_{21} \right|^2 \right) \quad (1)$$

In most cases, it is sufficient to use the theoretical transfer matrices when correcting for the effect of conical adapters. However, when analyzing materials with very low transmission loss (< 5 dB), accuracy of the measurement can be improved by accounting for viscous and thermal losses at the cone/air boundary layer. The influence of the conical adapters on the measured TL spectrum – with and without additional losses taken into account – for an ePTFE membrane is shown in Figure 11. Additional losses due to the use of the conical adapters were accounted for in the post-processing by adding a damping term to the complex wavenumber of air. Note that the increased TL bump at 5 kHz is an artifact of the measurement apparatus.

The acoustic impedance across the sample, or transfer impedance, is given by the difference in the ratios of pressure to particle velocity upstream and downstream of the sample:

$$z_{tr} = \frac{P_1}{V_1} - \frac{P_2}{V_2} \quad (2)$$

where subscripts 1 and 2 indicate upstream and downstream faces of the sample, respectively.

The transfer impedance of the material under test may be calculated from the reflection coefficient of the material with an anechoic backing<sup>6</sup>. The reflection coefficient, given the transfer matrix elements, is calculated as follows:<sup>6</sup>

$$R = \frac{T_{11} + \left( \frac{T_{12}}{\rho_0 c} \right) - \rho_0 c T_{21} - T_{22}}{T_{11} + \left( \frac{T_{12}}{\rho_0 c} \right) + \rho_0 c T_{21} + T_{22}} \quad (3)$$

The transfer impedance is then calculated according to Equation 4:<sup>6</sup>

$$z_{tr} = \rho_0 c \frac{\Re(1+R)}{\Im(1-R)} - 1 \frac{\dot{\circ}}{\circ} \quad (4)$$

Measured transfer impedances of the nonwoven fabric material and ePTFE membrane material are shown in Figure 12.

Transfer impedance measurements are helpful in determining engineering direction for material design and improvement. For example, comparing the real and imaginary parts of the calculated

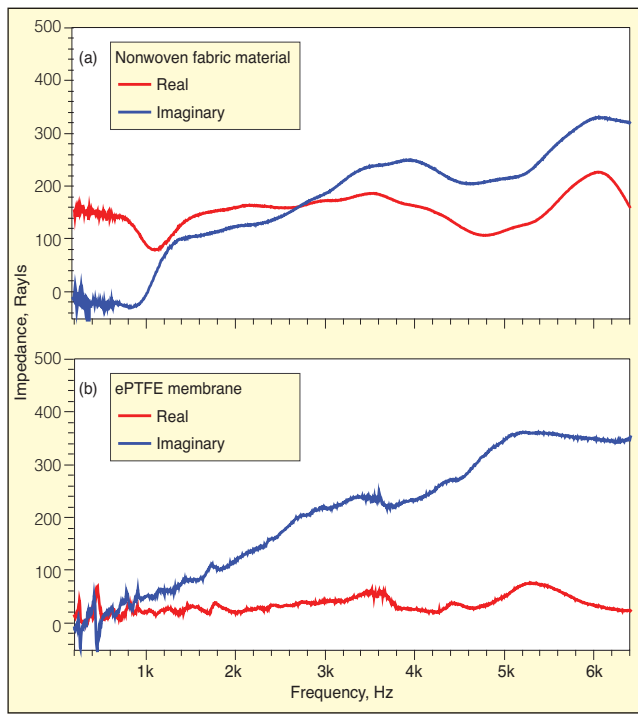


Figure 12. Real (red) and imaginary (blue) parts of the complex transfer impedance for a 250- $\mu\text{m}$ -thick nonwoven fabric (a) and a 9- $\mu\text{m}$ -thick ePTFE membrane material (b); sample diameter – 20 mm.

transfer impedance provides an understanding of the physical interaction between the incident sound and the sample under test. Frequencies at which the real, or resistive, part of the impedance is dominant indicate that sound energy is primarily being dissipated by the sample. Frequencies at which the imaginary, or reactive, part of the impedance is dominant indicate that the transmission loss

of the sample is due to its mass and stiffness properties.


## Conclusions

Measuring the transmission loss and acoustic impedance of small fabric samples presents an added challenge over typical thick material samples or muffler systems. This article has illustrated some basic guidelines for improved accuracy and success of these measurements.

These guidelines include:

- Mounting the test samples without tension is important, because membrane modes can cause peaks in the transmission loss spectra, which make data interpretation difficult.
- The excitation pressure amplitude is important for these materials, so using low levels and source equalization is recommended.
- Postprocessing the raw measurement results using the transfer matrix technique is important to remove the effect of the cones at low frequency and to remove the effect of viscous and thermal losses that are significant.

## References

- Hua, X., and Herrin, D., "Practical Considerations when Using the Two-Load Method to Determine the Transmission Loss of Mufflers and Silencers," *SAE Int. J. Passeng. Cars - Mech. Syst.*, 6(2):2013, doi:10.4271/2013-01-1881.
- Green, E., "Improving Tube Sound Transmission Loss Measurements Using the Transfer Matrix Technique to Remove the Effect of Area Changes," SAE Technical Paper 2015-01-2310, 2015, doi:10.4271/2015-01-2310.
- Standard Test Method for Measurement of Normal Incidence Sound Transmission of Acoustical Materials Based on the Transfer Matrix Method*, ASTM International Standard E2611-09, West Conshohocken, PA, 2009.
- M. L. Munjal, *Acoustics of Ducts and Mufflers, with Application to Exhaust and Ventilation System Design*, Wiley, 1987.
- O. Olivieri, J. S. Bolton and T. Yoo, "Measurement of Transmission Loss of Materials Using a Standing Wave Tube", *Proc. INTER-NOISE 2006*, 2006.
- Liu, Jinghao, "Advanced Studies on Series Impedance in Waveguides With an Emphasis on Source and Transfer Impedance," University of Kentucky Doctoral Dissertation, Paper 821, 2011. 

The author can be reached at: [kelby.weilnau@bksv.com](mailto:kelby.weilnau@bksv.com).